



## Unexpected Lessons Along Sutton Creek

Submitted by: Katie Gidley



August 17th was a beautiful day to ride on the beach...that is Baker Beach, situated along the beautiful-central Oregon coast. I chose to ride from Berry Creek to Sutton Creek that day.

The section at Berry Creek presented with unusual and challenging sand and dunes.

We, my horse Toney and I, decided to give it a go. The sun was out and there was no wind, so down to the beach we went.

Those dunes turned out to be unpredictable, yet passable. At times it was easy and then in a matter of a step or

two, you'd have sunk to your knees.

The trek was tedious picking our route until we reached the shoreline. With that behind us, we headed south to Sutton Creek.

There is a crossover dune trail about halfway to the creek one normally takes to the foredunes.

Once crossed, you can make loops in 3 different directions; 1) north to Baker Beach, 2) east to a playground of shore pines or 3) south to Sutton Creek.

I hadn't been that way for a while so was hoping to do the latter.

*Continued on page 3*

### What's Inside

Cover Story (Continued).....	3
President's Letter .....	4
Cover Story (Continued).....	5
Huge Thank You to BCHO, Donators and Committee Members.....	6
High-Desert Trail-Riders BCH.....	7
Hard as Rocks .....	8
Back Country Horsemen Helping Their Neighbors.....	9
Events Calendar .....	10
A Letter from Diane.....	12
Membership Reminder .....	12

## BCHO State Officers

President  
Duane Miller  
president@bcho.org

Membership  
See your local chapter

Public Lands Director  
Jerry Bentz  
pld@bcho.org

Education/LNT Director  
George Johnson  
education@bcho.org

Newsletter Articles & Layout  
Sara Lagasse & Shelly Williams  
editor@bcho.org

Newsletter Advertising  
advertising@bcho.org

Please feel free to contact our officers or staff if you need any assistance or have a question pertaining to BCHO.

## PURPOSES of BACK COUNTRY HORSEMEN of OREGON

To PERPETUATE the common sense use and enjoyment of horses in America's back country and wilderness areas.

To WORK to insure that public lands remain open to recreational stock use.

To ASSIST the various government, state, and private agencies in their maintenance and management of said resource.

To EDUCATE, encourage and solicit active participation in the use of the back country resource by stock users and the general public commensurate with our heritage.

TO FOSTER and encourage the formation of new state organizations and BCHA.

# Come to a meeting and make a difference...

### Columbia Gorge Chapter

Meets: The 3rd Wednesday of the month at the Hood River Saddle Club, 4384 Belmont Dr. Hood River OR at 7:00 p.m.

Please confirm meeting with contact.

Contact: Joy Senger at columbiagorge@bcho.org

### East Cascades Chapter

Meets: The 2nd Monday of each month at the Black Bear Diner, 1465 NE 3rd Street, Bend Oregon

Social hour 5:30-6:00 p.m., Meeting 6:00-8:00 p.m.

Contact: Duane Miller 541-619-0693, Dr-Miller@msn.com

### Emerald Empire Chapter

Meets: the 2nd Wednesday of each month at the Utility District building, 33733 Seavey Lp Road, Eugene, OR at 7:00 p.m.

Contact: Jean Clancy, emeraldempire@bcho.org

### High Desert Trail Riders Chapter

Meets: The 2nd Tuesday of each month at Waffle Hut, 106 Main St., Klamath Falls at 7:00 p.m.

Contact: Betty Applebaker, hdttr@bcho.org

### Sourdough Chapter

Meets: 3rd Thursday of the month at Community Bible Church, Room 202, 500 N. 10th Street, Central Point, OR at 7:00 p.m.

Contact: Cate Bendock, sourdough@bcho.org

### Steens Chapter

Meets: As needed! Please confirm meeting schedule and work party dates through SteensBCH@gmail.com or call John O'Connor 541-678-3502

### West Cascades Chapter

Meets: The 1st Wednesday of each month at Elmer's Restaurant, 3950 Market Street NE, Salem, OR. Dinner time is at 6:00 p.m. meeting at 7:00 p.m.

Contact: Jennifer Paulson, westcascades-pres@bcho.org

### Territorial Riders Chapter

Meets: The 2nd Tuesday of each month at the Beaver Creek Fire Department, 22310 S Beaver Creek Rd. Beaver Creek, Or. 97004 at 7:00 p.m.

Contact: Tim Lagasse, territorialriders@bcho.org

### High Country Wilderness Packers

Meets: Held by conference call every other month

Contact: Mat Wooley, hcwp@bcho.org

### Correction from June 2020 Newsletter

The article on page 11 in the June 2020 newsletter titled "How do I get there??" was written by Pete Reifel of HDTR

## Continuation of cover story

That dune, along with most dunes those past few days, was very large, steep and interesting as it looked like a Tsunami wave. We did make an attempt to cross. The trek to the base was difficult. Ascending the hill was worse. It was too soft, deep and steep.

Regarding safety, we backtracked to the beach and continued riding south. Upon arriving at Sutton Creek, we returned north bound and enjoyed the ride along the water.

The next day was just as beautiful. As my time was limited, the plan was to do a fast ride strictly on the beach to Sutton Creek and back. When we got to the crossover the dunes had been packed down that morning by the local "Rent a horse and take a ride" C & M Stables.

That was certainly an invitation to change plans and ride the loop to Sutton Creek via that foredunes trail.

This was not a problem for horse or rider. Within minutes, we were heading south along the creek just east of the dunes taking in the strangeness of the sand formations. The ride went smooth and the creek was crystal clear, beautiful and less than a foot deep.

We rode behind a section of dunes that is protected for nesting Snowy Plover's. (Proudly, our chapter organizes a cleanup there every year in March to help support their reproduction).

I know that trail pretty well and when I saw it went down a newly formed steep dune, we paused and evaluated as this dune was new. I could see the trail below, so on we went.

Once on flatland it wasn't long before we had to cross the creek. Again, I paused, as further upstream this creek is known to have pockets of quicksand and with normal sand and dune condition, it never needs to be crossed.

There were multiple deer tracks entering the creek below us and exiting tracks on the other side. I thought if a pack of them could cross, it was most likely safe for us. I was right. After a few moments we hit a solid, impassable patch of gorse. If you know what that is, you will avoid at all costs.

For the second time, I paused.

Again, there were deer tracks on both sides of the creek. Further down I saw the landmark house which meant the beach was just around the bend. I gave Toney a gentle nudge and without hesitation, he stepped into the creek. His stride was smooth, 1 foot, 2 foot, 3 foot 4!

As that last foot entered the creek, it felt as if cables in an elevator shaft snapped and we dropped multiple floors in a split second!

WHAM!

# Horse Trail Guidebooks!



[www.nwhorsetrails.com](http://www.nwhorsetrails.com)

Just like that! Toney was up to the base of his neck and my legs were immersed in quicksand.

If you have any knowledge or heard stories of this, it is quite frightening. I was alone, scared and feared for our safety. I could not move, and Toney was still.

Here the silver lining is this horse during times of danger, tends to trust humans. It was I who was not so sure of myself. Though panicky, my instincts were working.

Little by little my legs, moving like a pendulum, maximized my movement approximately 3-4" where water could slowly creep into that space and I could finally start to pull my legs upwards. With both hands upon Toney's croup I leaned backwards pulling my legs with me.

I was almost able to lay flat as I scooted off him. I reached overhead and safely touched land a foot or so away and pulled myself clear of him and the quicksand.

With tears in my eyes, I stood there staring at him and pleaded that he not drown.

Now thankfully, his reflexes somehow managed during his drop to rotate clockwise enough that he was almost facing me. I pulled and pulled his reins to no avail.

He could only stare at me with huge, beautiful brown eyes

*Continued on page 5*



# From the President

Submitted by: Duane Miller, President BCHO

*I hope everyone is well and being safe. This year has been interesting to say the least and definitely an understatement. COVID has definitely been a challenge and will continue to be for some time into the future. It is just another one of the challenges of life we will have to overcome. The fires were another event that has caused great damage and impacted many lives.*



*There has been a great outpouring of help to those that have been stricken is another example how the people pull together in times of need.*

*I will be meeting with our Region 6 Forest Supervisor and his staff along with other volunteer groups in the near future. Various topics will be discussed to look at how the forest service and volunteers can work together efficiently and more seamlessly.*

*It has been impossible with all the impacts that come about to schedule a board meeting or to have the annual meeting; with the current restraints on gatherings we will have to see if it will be possible to have an annual meeting in May 2021. It is also hard to have an online meeting due the inability of everyone to have good internet; or internet at all. If anyone has a suggestion please let me know and be happy to try and make a meeting happen.*

*I hope as we move forward that conditions change enabling us to conduct activities on a more formal face to face basis, and get back to something close to the normal we have experienced in the past. Until then I will keep you informed as much as possible of what is happening from the meetings that I attend. If you have questions feel free to contact by phone or e-mail.*

**EVERYONE STAY HEALTHY AND SAFE.**

- Duane

# Frontier Trailer Sales

5013 Washburn Way  
Klamath Falls, OR 97603  
**541-883-2003**



# Wilson TRAILER

Check Out Our Inventory at ...

**frontier-trailersales.com**



Continuation of cover story from page 3

pleading to save him too.

Finding my phone, I tried calling 911 and the forest service. When you are in that state, you forget that Apple phones make you first say, "Hey Siri" until she responds "How can I help" before a call is made?

You instead scream "Call 911 or call the Siuslaw Forest Service" and nothing happens.

At that exact moment of despair, my husband Rich calls and says "Hey, how ya doing? I just had a great golf game" in the happiest of tone. I was babbling and when I said quicksand, he reassuringly calmed me down while giving great advice.

He told me when he hangs up, to step back and take several slow, deep & calming breaths. After that, talk softly to Toney, telling him it's OK. Gently coax him to shore with a gentle pull on his reins and lastly to let him know when we were both safe. I did calm down and do as he asked.

Toney responded, his eyes softened and he too relaxed. I could sense underneath he was rocking back and forth allowing water to seep into the gaps he was making.

I think he first pulled his right front leg up and landed it somewhere more solid beneath him. He did a similar move with his back left. He stilled himself and looked directly into my eyes. I felt a surge of energy about to happen.

Within seconds he catapulted himself to solid land and stepped forward to place his forehead onto my chest. For several minutes, neither of us moved. I gently rubbed his ears, whispering sweet nothing's into them and cried. I then called Rich to let him know we were safe. Toney & I returned the way we came.

As I rode back, I thought of how much I love my horse, my family of friends, my BCH Emerald Empire Chapter for all lessons learned about riding and its challenges & especially Rich whose calmness and confidence in me, saved both horse and rider.

Once I arrived home in Eugene, I educated myself in this bizarre fluke of nature. I learned quicksand is dangerous, however in most cases, not fatal! Sinking should stop somewhere around the abdominal cavity and that air will help stop you from sinking. Small back and forth movements allow water to seep in making you more mobile, creating more surface area with your body keeps you afloat and more importantly, staying calm and collected helps humans, animals, thought and focus!

Lastly I should've listen to those who know best, like BJ Keele. This is her stomping grounds AND she too has shared a similar fate in those beautiful dunes.

**This is my story of quicksand.**



WWW.HORSEANDMULEGEAR.COM

(360) 435-3889

P.O. Box 364 • ARLINGTON, WA 98223



*"So big and friendly, you'll think you're in Texas"*

**Chris Zucker**

(503) 362-4973 • 1-800-508-4973 • Fax (503) 362-3150

[www.doublehwesternwear.com](http://www.doublehwesternwear.com)

E-Mail: [Doubleh@doublehwesternwear.com](mailto:Doubleh@doublehwesternwear.com)

4198 Silverton Rd. NE • Salem, OR 97305



800-657-2644 • Weiser, Idaho

## Big Selection of High Quality Pack Gear & Equipment



Bear Cloth Panniers

- Saddle Bags
- Mule Halters
- Crupper & Saddle Breeching
- Gun & Bow Scabbards

Custom Orders

Welcome!



Phillips "Formfitter" Pack Saddle!



[www.outfitterspackstation.com](http://www.outfitterspackstation.com)



# Huge Thank You to BCHO, Donators and Committee Members

Submitted by: From Emerald Empire chapter, Scorpions, and Six Lakes Trail in the Waldo Lake Wilderness



Thanks to money from donating members, grant committee, efforts of the Scorpions, the Emerald Empire chapter of BCHO, High Country Wilderness Packers.

We are getting a trail that has not been open for several years, opened, improved, even opening up some loop possibilities in the north the Waldo area.

A very beautiful area with some very large old growth trees along a lot it, with six lakes also along it.

The Scorpions are a group of local folks who are crazy enough to want to spend their time doing trail work as their pastime.

They want to go into the more needful deeper part of wilderness area but they find it easier if they don't have pack all of their gear, tools, safety equipment.

We are able to pack support their efforts and offset our expenses.

Thanks to monies applied for and granted by the BCHO Grant committee.

The crew went out of their way to cut the trail out to pack stock specifications due to our support.

They fixed water drainage issues, fixed water crossings, and continued to attack much needed brushing.

This trail is found after a 3.4 miles ride from Harrelson Horse Camp. Starts with crossing of outlet of Waldo

lake, and then head downs into a valley of one lake after another.

Good fishing to be had and good swimming lakes.

We did have some trouble with new trees in the old burn areas but FS had already had time to get some the trees out of the clearing limits.

Monies went toward Gas receipts, and repair of broken equipment.

Looking forward to repeating this very effective collaboration in the near future.





# High-Desert Trail-Riders BCH

High Desert Trail Riders have been pretty busy this year despite all the complications with Covid-19. Our year began with preparing for the Klamath Basin Home Show.

Just as we were going to set up the event was cancelled. We had many demonstrations set up. Part of our booth as an awesome Raffle, BBQ, Patio set, and dinner at the Cowboy Dinner tree.

With the cancellation of the Home Show, we moved the Raffle to an On-line Raffle. It was a big success. A good way to have a raffle with all the different events being cancelled.

We have had several small group rides, and a camp out at the Rye Spur Horse Camp.

The Forest Service was kind enough to let us have exclusive use of the facility for the weekend.

We were joined by folks from the Top of the State BCH unit in California. Great way to interact with other BCH folks.

Our pack support has been busy helping the Forest Service trail crew and the Pacific Crest Trail Association hauling camps, tools and supplies.

We are lucky on this Forest that the trail crew has been able to get so much done. With our help, they get more miles of trails cleared. Some Forests are just now letting the volunteers help.

With the large fires, much of the trail work stopped. It's now time to finish up the season and start setting up for winter.

Many of the project will have to wait until next year.

In September we held a Trail Challenge at the Beautiful Cold Creek Ranch.

It was a bigger success we first thought. There were 15 Obstacles spread out over several acres.





# Hard As Rocks

Submitted by: Jean Clancey, BCHO



“These trees are hard as rocks!” That was the consensus among 11 members of Emerald Empire Chapter who tackled a log-out project in October this year. “Like sawing through concrete!”

The trees in question are those still falling onto trails from the 1996 Charlton Lake Fire, which occurred when lightning struck the forest north of Waldo Lake in 1996.

10,000 acres of forest wilderness burned so hot, it is said, that the soil itself was sterilized. And 24 years later the dead, bare trees that are still standing are so dry and hard they seem to have spent the last two decades baking in a kiln.

Working in conjunction with a Scorpion trail crew, our group hoped to log out the Wahana Trail north as they worked south.

The plan was to meet up and clear the trail in its entirety. We didn’t even get close. A full day’s work and our crew had made just one and a half miles. Some of the big trees took over an hour each to crosscut through.

Getting these babies off the trail required all the strategy, stamina, and perseverance we could muster.

Challenge? Yes! Success? Absolutely!

Measured in terms of satisfaction with a job well done and excellent teamwork, the day was fantastic. Hunters, hikers, and cyclists we met along the way were impressed with our work and our horses.

This is what BCHO members do so well: work, ride, and have fun.

Riding back to our rigs along the scenic north shore of Waldo Lake was pure pleasure. Our chapter recommends you visit, or re-visit, the Waldo area. There are at least a dozen trails in the area to explore. Some are in the burn area, but many are in the deep forest. There are lakes to visit throughout.

Harrelson Horse Camp has plenty of room, a vaulted toilet, but no water. Horse water is available at Waldo Lake.

There are no corrals. You’ll need high lines or portable corrals.



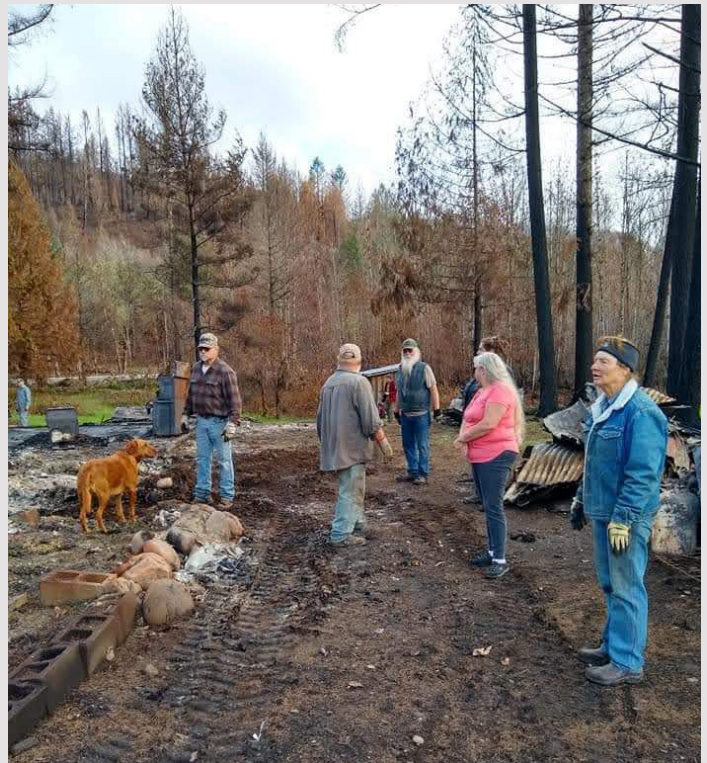


# BACK COUNTRY HORSEMEN HELPING THEIR MEMBERS

At our last West Cascade BCH meeting there was a work Party Planned by Arden Corey to help clean up members property that got burned in Gates, Oregon. They lost all out buildings, RV, Tractor, pick up, tools, trailers etc. Amazingly their home was spared and so were animals.

I received some photos of clean up of how BCH helps. Metal from buildings stacked, other metal for recycle in pile, truck loaded and hauled off.

Pray for a complete recovery.





# Events Calendar

Event Start	Event End	Event Hours PST	Event Title	Event Description	Event Location
11/5/2020	11/5/2020	07:00PM - 08:00PM	BCHO President Call	Dial 712-451-1093 to join the monthly presidents call, a recorded voice will ask then for a Access Code, enter 736109 pound sign.	
12/3/2020	12/3/2020	07:00PM - 08:00PM	BCHO President Call	Dial 712-451-1093 to join the monthly presidents call, a recorded voice will ask then for a Access Code, enter 736109 pound sign.	
12/19/2020	12/19/2020	02:00PM - 05:00PM	Columbia Gorge Christmas party		Hood River Saddle Club, 4384 Belmont Dr, Hood River, OR 97031, USA
1/7/2021	1/7/2021	07:00PM - 08:00PM	BCHO President Call	Dial 712-451-1093 to join the monthly presidents call, a recorded voice will ask then for a Access Code, enter 736109 pound sign.	
2/4/2021	2/4/2021	07:00PM - 08:00PM	BCHO President Call	Dial 712-451-1093 to join the monthly presidents call, a recorded voice will ask then for a Access Code, enter 736109 pound sign.	
3/4/2021	3/4/2021	07:00PM - 08:00PM	BCHO President Call	Dial 712-451-1093 to join the monthly presidents call, a recorded voice will ask then for a Access Code, enter 736109 pound sign.	
3/20/2021	3/20/2021	08:00AM - 01:30PM	Clackamas 4-H Tack Sale	The Clackamas County 4-H Tack Sale is a fundraiser for the 4-H Horse Advisory Committee. It is held twice each year at the Clackamas County Fair and Event Center in Canby, on the third Saturday of March and October. The sale includes new and used tack as well as other horse-related items.  Parking \$5, admission is \$1 per person.	694 NE 4th Ave, 694 Northeast 4th Avenue, Canby, OR 97013, USA
4/1/2021	4/1/2021	07:00PM - 08:00PM	BCHO President Call	Dial 712-451-1093 to join the monthly presidents call, a recorded voice will ask then for a Access Code, enter 736109 pound sign.	
5/6/2021	5/6/2021	07:00PM - 08:00PM	BCHO President Call	Dial 712-451-1093 to join the monthly presidents call, a recorded voice will ask then for a Access Code, enter 736109 pound sign.	
6/3/2021	6/3/2021	07:00PM - 08:00PM	BCHO President Call	Dial 712-451-1093 to join the monthly presidents call, a recorded voice will ask then for a Access Code, enter 736109 pound sign.	
7/1/2021	7/1/2021	07:00PM - 08:00PM	BCHO President Call	Dial 712-451-1093 to join the monthly presidents call, a recorded voice will ask then for a Access Code, enter 736109 pound sign.	
8/5/2021	8/5/2021	07:00PM - 08:00PM	BCHO President Call	Dial 712-451-1093 to join the monthly presidents call, a recorded voice will ask then for a Access Code, enter 736109 pound sign.	
9/2/2021	9/2/2021	07:00PM - 08:00PM	BCHO President Call	Dial 712-451-1093 to join the monthly presidents call, a recorded voice will ask then for a Access Code, enter 736109 pound sign.	
10/7/2021	10/7/2021	07:00PM - 08:00PM	BCHO President Call	Dial 712-451-1093 to join the monthly presidents call, a recorded voice will ask then for a Access Code, enter 736109 pound sign.	
10/16/2021	10/16/2021	08:00AM - 01:30PM	Clackamas 4-H Tack Sale	The Clackamas County 4-H Tack Sale is a fundraiser for the 4-H Horse Advisory Committee. It is held twice each year at the Clackamas County Fair and Event Center in Canby, on the third Saturday of March and October. The sale includes new and used tack as well as other horse-related items.  Parking 5\$, admission is \$1 per person.	694 NE 4th Ave, 694 Northeast 4th Avenue, Canby, OR 97013, USA





# UNEXPECTED INJURY?

**Emergency Medical Transport**

**100% Year Round Coverage - \$85/  
Household (discounts available)**

**You can count on Airlink CCT, Your  
Strongest Link.**

**Enroll today:  
[www.AMCNRep.com/Jennifer-Hart](http://www.AMCNRep.com/Jennifer-Hart)**

**Or Call:  
Jennifer Hart • 541-294-4868**





# A Letter from Diane

*Hi All, Diane Eek here from the BCHO Sourdough and High Desert Trail Riders Chapters.*

*As most of you have experienced in your own Chapters, the Sourdough chapter of BCHO has had its trials in 2020 to get trail work done. It's been a tough year with the COVID-19 rearing its ugly head. When the forest closed, and agencies had to postpone or delay projects, it affected all of us. Our calendar definitely changed course, delaying our planned trail work in some new and exciting front country locations in Ashland and surrounding areas. Our chapter has been very proactive in working with different user groups in our Southern Oregon area.*

*The planning of this work, however, continued with enthusiasm and will be on the 2021 calendar.*

*2020 wasn't all negative. We were able to bring packing activities into our group. With the Butte Falls pack station closing, there has been no easy way for the trail workers to get into our wilderness or surrounding forest. I have been a member of HDTR chapter in Klamath Falls, for nearly 20 years, packing with them for fun, as well as working with them packing with the USFS trail crews. I now live in Prospect, OR., and when the Sourdough Chapter moved to Medford area, I joined their Chapter as well.*

*Needless to say, with the Sky Lakes Wilderness in my backyard, I was itching to introduce the packing activities into this Chapter. Along with Betty Applebaker, we talked to them and received an exciting response. She encouraged me to offer them help learning some packing skills. That's all it took to get our group going.*

*The more members I met, the more talented people I found, both with current experience as well as past. One member, Aaron Bastion, had lots of time on the trail and agreed to help do a class. I met Bill Cease, and Ron Mortenson who had done some packing with HDTR.*

*Also, Frank Mowery and Cate Bendock, both with some experience, wanted to forge ahead and hone their skills. With all that said, the next step was to contact the USFS and offer them the opportunity to use our group to pack in supplies and equipment for the crews that work so hard keeping our trails open.*

*I was given the name of Angie Panter, who was leader of the trail crews based out of Butte Falls Ranger District. I had worked with her before on the Fremont-Winema Forest. We were able to put together some good meetings, both in person, and on the phone.*

*We went over maps and what projects she wanted to accomplish. I talked to our packers and they were ready to go to work.*

*Then COVID-19 hit and put, not only these projects, but our scheduled pack classes on hold. We stayed in touch, and in*



Upper Rogue River USFS Crew at work assisting the Sourdough Chapter pack in of bridge timbers and equipment Aug 31 – Sept 3, 2020



Bill Cease of BCHO Sourdough Chapter tying a bridge timber load.





Annette Parsons leading mule, Daisy, in with equipment. Everyone loved Daisy and Annette!



Angie and Samantha, The Bridge!

*mid-summer it was great news when we heard that the bridge project was a go and that they wanted us to pack for them. I was put in touch with Lance Sargent, our USFS Trails and Recreation supervisor, and he, Angie and I planned our job. It was scheduled the first week of September and all parties planned what was ahead. We were to pack all the tools and equipment the crew needed to cut stringers and build the structure.*

*Also, the 5-foot 6" x 12" decking for the 30' bridge. We did recon with Lance and Angie on the trail and location of the bridge, confirming what work was needed to be done before the pack-in. I had 6 packers, myself, Bill, Ron, Cate, Gayle Carlson from HDTR's, and member Annette Parsons who joined us with her little mule and all her knowledge learned from USFS and a PCT section she completed. We also had the support from HDTR if we needed. It doesn't get much better than that. Our 2-day pack came and went without any major problem.*

*The Forest Service crew were a huge help, weighing and organizing what we were to pack. A huge thank you to all of them. They were energetic and professional and we enjoyed them all. Hats off for my hard-working packers who handled it with expertise and good cheer. We had a great time and a fun camp out. All of us are looking forward to projects in 2021 of two more bridges and maybe a turnpike on the same trail.*



Ron Mortinson tying a load of timbers.

*This has been a very exciting project. This is a section of the very scenic Upper Rogue River Trail. It is 18 - 20 miles long and the only section open to equestrian use. The trail has had little care for some years, and with BCHO's enthusiasm for keeping equestrian trails open, we are seeing USFS Agencies supporting the effort. This does not mean we should take this for granted. We must be diligent in keeping the dialogue going. We might also be planning a big project on the Red Blanket Trail. This trail is the direct route to beautiful Stewart Falls and access to the PCT. I look forward to continuing the work with the USFS Agencies, our current packers, and those members wanting to join in.*

*With all this high county and front country work we have on the books; we could have a very busy year. We are all hoping the COVID-19 issue will wind down and we can get back to normal. Cross your fingers!*

*Have a safe holiday season and we will see you next year with boots on. I am headed south to AZ to chase that little white ball around the desert and enjoy the warm weather. I'll be looking forward to 2021!*

*Cheers, Diane*

# ANNUAL MEMBERSHIPS

## Membership Reminder

### Fellow Back Country Horsemen of Oregon

It is that time again to start gathering our annual memberships.

Please submit your renewal membership through your chapter to keep you in touch with folks who are doing rides and projects in your area. Also know that we at the BCHO State level have plans for ongoing education, projects and opportunities to get together that make our membership so rewarding.

If you find it easier, certainly know that you can go online and join. Also asking that you take a moment and make what we want to do possible by considering making a Tax-Deductible donation also through the Website.

[WWW.BCHO.ORG](http://WWW.BCHO.ORG)

Thank You, Becky Hope, BCHO membership coordinator

--

Becky Hope, BCHO membership coordinator  
37245 Wheeler Rd  
Pleasant Hill, OR 97455  
[6fhope@gmail.com](mailto:6fhope@gmail.com) 541-337-3138(C)





# Back Country Horsemen of Oregon, Inc.

## Membership Application

Yes! I would like to help preserve Horsemen's rights  
to use stock on public lands.

\_\_\_\_\_  
(Print Name)

\_\_\_\_\_  
(Address)

\_\_\_\_\_  
(City)                      (State)                      (ZIP)

\_\_\_\_\_  
(Telephone)                      (E-Mail)

New\_\_\_Renewal\_\_\_ (Please check)

BCHO Membership Dues

Single	\$30	_____
Family	\$40	_____
Patron	\$100	_____
Benefactor	\$250	_____
Sustaining	\$500	_____

Select Chapter and add additional Chapter dues, as determined by individual Chapters, see below.

[See Map of Chapters, www.bcho.org/chapters/](http://www.bcho.org/chapters/)

- |  |  |
|--|--|
| <input type="checkbox"/> Columbia Gorge, Hood River \$10                 | <input type="checkbox"/> Steens, South East Oregon \$10      |
| <input type="checkbox"/> East Cascades, Bend                             | <input type="checkbox"/> Sourdough, South West Oregon \$5    |
| <input type="checkbox"/> Emerald Empire, Eugene \$5                      | <input type="checkbox"/> Territorial Riders, Oregon City \$5 |
| <input type="checkbox"/> High Country Wilderness Packers                 | <input type="checkbox"/> West Cascade BCH, Salem \$5         |
| <input type="checkbox"/> Chapter   | <input type="checkbox"/> Member At Large                     |
| <input type="checkbox"/> High Desert Trail Riders,<br>Klamath Falls area |  |

Total Enclosed: \_\_\_\_\_

Our newsletter the Highline, will be emailed to you at the address you entered above.

Check here if you prefer to receive the newsletter by US mail.

**MAIL your application to:**  
**Becky Hope, 37245 Wheeler Rd. Pleasant Hill, OR 97455**  
For questions email [membership@bcho.org](mailto:membership@bcho.org)

Liability Release: Recognizing the fact that there is a potential for an accident where ever horse use is involved, which can cause injuries to horses, riders and spectators, and also recognizing that Back Country Horsemen of Oregon, Inc., including its chapters, officers, directors and /or members cannot know the condition of trails or the experience of riders or horses taking part in trail rides or other Back Country Horsemen of Oregon functions, I do hereby release Back Country Horsemen of Oregon, Inc., its officers, directors and members from any claim or right for damages which might occur to me, my minor children or horses.

Signed\_\_\_\_\_Date\_\_\_\_\_

Signed\_\_\_\_\_Date\_\_\_\_\_

\*Must be signed by all chapter members 18 years and older.

Some Dues maybe deductible as charitable contributions for income tax purposes.  
Dues may be considered ordinary and necessary business deductions.

BCHO website: [bcho.org/membership/](http://bcho.org/membership/)



Back Country Horsemen of Oregon  
c/o Becky Hope  
37245 Wheeler Rd  
Pleasant Hill, OR 97455  
(541) 337-3138

