



U.S. Forest Service Guidance on Use of Equestrian Campsites

Submitted by Sara Lagasse, Highline Editor

From the desk of Public Lands and the hard work of many at BCHA and others, I saw this email in my inbox and I feel obligated to share it and what better way to do that than with our Highline.

I know this topic is on our minds every year, and with camping season quickly approaching, this year will be no different. That's why I was really happy to see some communication and guidance on Equestrian Campsites. Below is the repost of the email communication that I received. However I would like to stress that above all, please be courteous to all campground users with or without stock as noted below in the "Special notes" section. We are people first, rather than horse people or Campers or hikers etc., that are trying to take a relaxing break from our day to day life. It's what keeps us all sane now days. I know sometimes hard to do but it's a good practice for Equestrians and our sanity.

So without further ado this is the email that I received From BCHA...

At the prompting of BCHA and allies that include the American Horse Council, the Forest Service national office circulated a memo to all national forests and national grasslands titled "Recommended Best Practices for Managing Stock Use Sites at Developed Campgrounds." A copy of that memo can be **found here. (I have printed this link out below)**

We encourage BCHA chapters and volunteers to review this memo and, importantly, to use it as a reason to schedule a meeting with personnel at your local national forest to assist you to achieve the following objectives:

1. Ensure the memo was received by the local Forest Service office,
2. Discuss with forest staff the magnitude of the problem locally and the memo's relevancy and implications, and
3. Come to agreement on what adjustments in the management of equestrian campsites within Forest Service jurisdiction might be implemented in order to communicate to the public the need to prioritize equestrian campsites for use by parties with stock.

Background

Last year, BCHA approached the Forest Service regarding what options exist to minimize the extent to which parties without stock were occupying designated equestrian campsites throughout the National Forest System. We pointed out that agency policy for developed campgrounds prohibits parties from "Bringing in or possessing a saddle, pack or draft animal except as authorized by posted instructions" (Code of Federal Regulations, Section 36, subsection 261.16(l)). That is, parties with stock are prohibited by law from occupying Forest Service campsites that are not designated for equestrian use.



What's Inside	
Chapter Meeting Times.....	2
U.S. Forest Service Guidance on Use of Equestrian Campsites.....	3-7
Ochoco National Forest, Allen Creek Horse Camp Trail Map.....	9
Our Horses Help Clean up the Beaches	10-11
Some Interesting Geology	12
Highline Advertising	13
Events Calendar	14-17
Membership Reminder	18-19

Continued on page 3

BCHO State Officers

President

Casey Hustader
president@bcho.org

Membership

See your local chapter

Public Lands Director

Jerry Bentz
pld@bcho.org

Education/LNT Director

George Johnson
education@bcho.org

Newsletter Articles

Sara Lagasse
newsletter@bcho.org

Newsletter Advertising

Melanie Kate-Mason
advertising@bcho.org

Please feel free to contact our officers or staff if you need any assistance or have a question pertaining to BCHO.

The Purposes of Back Country Horsemen of Oregon

To PERPETUATE the common sense use and enjoyment of horses in America 's backcountry and wilderness.

To WORK to insure that public lands remain open to recreational stock use.

To ASSIST the various government and private agencies in their maintenance and management of said resources.

To EDUCATE, encourage and solicit active participation in the wise use of the backcountry resource by horsemen and the general public commensurate with our heritage.

To FOSTER and encourage the formation of new BCHO chapter organizations.

Come to a meeting and make a difference...

Columbia Gorge Chapter

Meets: The 3rd Wednesday of the month at the Hood River Saddle Club, 4384 Belmont Dr., Hood River, OR 97031

7:00p.m. – 8:30p.m. | ***Please confirm meeting with contact.***

Contact: Joy Senger, columbiagorge@bcho.org

East Cascades Chapter

Meets: The 2nd Monday of each month at Pleasant Ridge Community Hall, 7067 SW Canal Blvd., Redmond, OR 97756

Potluck at 6:30p.m. and meeting after.

Please confirm meeting with contact.

Contact: Duane Miller, eastcascades@bcho.com

Emerald Empire Chapter

Meets: the 2nd Wednesday of each month at the Emerald People's Utility District, 33733 Seavey Loop Rd., Eugene, OR 97405

6:30p.m. – 8:30p.m. | ***Please confirm meeting with contact.***

Contact: Melanie Kate-Mason, emeraldempire@bcho.org

High Country Wilderness Packers

Meets: Held by conference call as needed

Please confirm meeting with contact.

Contact: Mat Wooley, hcwp@bcho.org

High Desert Trail Riders Chapter

Meets: The 3rd Tuesday of each month at the Waffle Hut, 106 Main St, Klamath Falls, OR 97601

6:30pm | ***Please Confirm meeting with contact.***

Contact: Betty Applebaker, hptr@bcho.org

Sourdough Chapter

Meets: 3rd Thursday of the month at Community Bible Church, Room 202, 500 N. 10th St., Central Point, OR 97502

7:00p.m. – 8:30p.m. | ***Please confirm meeting with contact.***

Contact: Cate Bendock, sourdough@bcho.org

Steens Chapter

Meets: Held as needed, please confirm meeting and work party dates with contact.

Please confirm meeting with contact.

Contact: SteensBCH@gmail.com

Territorial Riders Chapter

Meets: The 2nd Tuesday of every month at Beaver Creek Fire Dept., 22310 South Beaver Creek Rd., Beaver Creek, OR 97004

7:00p.m. – 9:00p.m. | ***Please confirm meeting with contact.***

Contact: Dan Dahlke, territorialriders@bcho.org

West Cascades Chapter

Meets: The 1st Wednesday of each month at Elmer's Restaurant, 3950 Market St. NE, Salem, OR 97301.

Dinner at 6:00p.m. Meeting at 7:00p.m.

Please confirm meeting with contact.

Contact: Arden Corey, westcascades-pres@bcho.org

Yet, there is no corresponding regulation that prevents parties without stock from occupying developed equestrian campsites. The problem of occupied horse camps escalated across the nation during the COVID pandemic, when many families and others chose close-to-home vacations in favor of long-distance travel. The Forest Service memo describes well the implications to stock users of this growing problem.

Horse Camp Incident Report Form

BCHA and its allies developed a Horse Camp Incident Report form for members to capture and record incidents where parties without stock are occupying Forest Service equestrian campsites. The form can be **found here**. An online version of the form can be downloaded to your smart phone; it can be **accessed here**. **(I have printed this link out below)**

The purpose of the form is to support BCHA should we need to make the case for new regulations to prevent parties without stock from occupying equestrian campsites. BCHA is pleased that the Forest Service issued the aforementioned memo to field staff; it represents a logical first step to apply education to help lessen the problem.

We don't know that education alone will prove sufficient to solve the horse camping problem. By collecting your accounts of incidents in the field, we might better document the magnitude and geographic extent of the problem. Consequently, BCHA is relying on its members to provide data from the field of your observations, should we need to promote further solutions.

Special notes:

- Always be courteous to other campground users. It's likely that any party without stock has occupied an equestrian campsite because regular campsites were already taken or reserved.
- Remember, it's not illegal for others to camp in an equestrian campsite. Plus, some folks might not know the difference between an equestrian and regular campsites (seriously!) or why their occupancy of an equestrian campsite might force us to travel far distances in order to find a legal campsite — if not forced to return home, an outing ruined.
- If you end up speaking with such parties, use these talking points to educate them about the scarcity of legal campsites for equestrian use and what happens when parties without stock occupy equestrian campsites.

Here is the Copy of the Memo from United States Department of Agriculture for Recommended Best Practices (This is the first noted "found here" link in the email) This is on the letter head from the USAD and FS as noted below...

Recommended Best Practices for Managing Stock Use Sites at Developed Campgrounds

Date: November 15, 2021

Contact: Surina Singh

Email: surina.singh@usda.gov

Issue Summary: With increasing use levels at developed sites, there are reports of campgrounds and campsites designed for use by stock users being increasingly occupied by campers without stock. Since there are very limited camping options for stock users, this is resulting in displacement of this user group. Likewise, this can result in safety concerns as non-stock users are often unaware of proper etiquette around stock. There is no policy for managing stock use sites, so this document provides best practices to assist local units when addressing this issue.

Introduction: The objective of this white paper is to raise awareness of the use of campgrounds and campsites designed for stock use by non-stock users, highlight associated safety concerns, and recommend best practices for managing horse campgrounds and campsites to better serve the public. Equestrian campgrounds and campsites are also referred to as horse camps and stock sites. For the sake of consistency, this paper will further address these sites as horse campsites or horse campgrounds. Users with non-stock needs from other recreation user groups will be addressed as non-stock users. Certain regions allow horses at other types of sites like trail heads, picnic areas, and cabins, but this document will focus on horse campgrounds and campsites.

Background: Campgrounds throughout the country are seeing an increase in visitation. This has resulted in larger numbers of non-stock users in campgrounds and campsites intended for stock campers. The Equestrian Design Guidebook describes equestrians as, "a person who rides (or "packs") a horse or mule...can also describe anything related to horses and mules, such as an equestrian trail."

The NRM-Infra Database defines horse campground as a "site with camp units managed primarily to accommodate riding and pack stock and overnight use: Development Scale 2-5." A horse campground generally includes infrastructure specific to stock campers, such as water tanks, corrals or highline areas, hitching posts, and larger parking sites to accommodate trailers.

The use of horse campgrounds by non-stock users is a real issue for stock owners who are hauling and caring for large live animals with very specific needs.



Palisades Horse Camp, San Juan NF

Continued on page 4

It can be difficult for stock campers to locate other horse camping options as supply is limited and they are unable to utilize traditional camping facilities due to site designs or prohibitions. Without a campsite, stock owners are often forced to disperse camp on the side of forest roads without adequate water supplies for the animals.

The Equestrian Design Guidebook also notes, “Adults who are not familiar with stock might unintentionally create problems....” Having non-stock campers near stock users and their stock can create safety issues for both parties. Non-stock users are often unaware of proper etiquette around stock, stock handling protocols, and basic equine/stock behavior. The amenities present at horse campgrounds and recreating near stock can provide a different recreation experience and should be used to educate non-stock users before they decide to reserve or occupy a horse campsite. Non-stock users at horse campgrounds commonly report a subpar experience due to their proximity to stock facilities and stock.

There is currently limited and inconsistent messaging to make visitors aware that most horse campgrounds are specifically designed and constructed to serve stock campers and not intended for use by non-stock users. This messaging, usually limited to onsite signage or online on Forest Service and Recreation.gov websites, leaves non-stock user groups with little information on the importance of horse campgrounds to campers with stock. Clear and consistent messaging can help inform and direct people and set user/visitor expectations for the use of horse campgrounds and campsites on developed recreation facilities across the National Forest system.

Existing Policies:

FSH 2309.13 10 Planning and Design of Developed Recreation Sites and Facilities

12.12 - Install signs and posters at developed recreation sites where necessary or helpful to visitors but keep them to a minimum.

12.12a – Provide bulletin boards at a central location at developed recreation sites for posting rules, regulations, length of stay limits, and other information. Notify the public of the conditions of occupancy and use at each developed recreation site. Signs should be positive in tone and should explain the reasons for regulation.

FSH 2309.13 Recreation Site Handbook. Chapter 50 – Forest Service Operation and Maintenance of Developed Recreation Sites

53.1 – 1. Developed recreation sites are managed for a quality visitor experience without compromising the natural resources of the area.

2. Recreation opportunities at and development and management of developed recreation sites are consistent with the applicable recreation opportunity spectrum class...

53.28 – Provide reservation services for developed recreation sites when it is desirable for the public to have assurance that they will be available on a particular day

3. Set reservation windows in Recreation.gov based on observed use patterns at developed recreation sites and, where possible, public demand.

4. Continue to improve site information on Recreation.gov, particularly photographs and safety messages.

Recommendations:

Education & Coordination

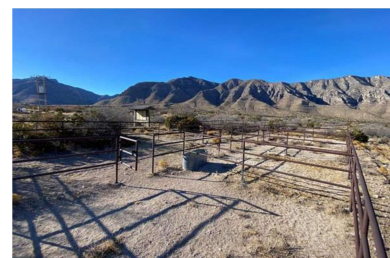
1. Raise awareness of this issue and share best practices with forest-level staff. Regional Developed Recreation Program Managers can facilitate this conversation with local district or forest units and help address any possible future problems within their areas.

2. Advise stock campers to work with their local district or forest on specific campground issues.

3. Consider shortening the booking window for how long in advance non-stock users can book campsites in areas with limited horse campgrounds.



Indian Creek Horse CG, Pike-San Isabel NF



Frijole Horse Corral Campsite, Guadalupe Mtns. NP

Best Practices for Recreation.Gov:

1. Encourage local district or forest units to place horse campgrounds or a high percent of horse campsites onto the national reservation system under Recreation.gov. This will allow stock users to -*reserve horse sites in advance to reduce the risk factor of travelling long distance to a site only to find out that non-stock users got there first.

2. Recommend local district or forest units to include the following information in the ‘Need to Know’ section on National Forest websites and Recreation.gov reservation pages to explain the intended use of horse sites (see Appendix A):

• “The horseshoe icon on the site map indicates that this campsite is designed for stock use. Please be courteous and select non-horse sites or view alternative “Campgrounds Nearby” section below. (Figures 1 and 2)

• “This site is designed for stock use. If your party does not need access to a horse campsite, please consider selecting another site or review the “Campgrounds Nearby” section below.

Continued on page 5

Continuation of cover story from page 4

• “This site has the following amenities to accommodate for stock users: (insert amenities that apply to your campsite). Please be aware that recreating near horse campgrounds can provide a different experience to non-stock users. Please be courteous and select non-horse sites or view alternative “Campgrounds Nearby” section below.

3. Consider shortening the reservation window to provide local stock campers with greater opportunity to reserve campgrounds.

4. Consider including the option to input how many horses and the size of the horse trailer being brought as part of the reservation information at the reservation portal.

Best Practices for Onsite Management:

1) Consider posting the following statement onsite to increase awareness of visitor responsibilities.

For other examples of signage see Appendix B.

i) Please Respect that this campground is designed and constructed with features designed specifically for stock camper use and the care of their animals, vehicles, and gear. If you are camping without stock, please select a non-horse-based site or review the map on the bulletin board for other nearby campgrounds. Thank You!

2) Provide a safety document on the bulletin board addressing proper horse campground etiquette, handling protocols, and basic stock behavior to educate all recreation users about using horse campgrounds.

3) Educate and train campground hosts, call center staff, and any relevant Forest Service representatives to provide the tools to properly educate all recreation users on the expectations of recreating on horse campsites. Place emphasis on all users having access to all sites and non-stock users still having the option to recreate at horse campgrounds while raising awareness about the differences in experiences at each campsite.

4) Consider a forest order, in coordination with the Forest Supervisor’s office, to manage horse camp site use. (See Appendix C)



WWW.HORSEANDMULEGEAR.COM
(360) 435-3889
P.O. Box 364 • ARLINGTON, WA 98223

Frontier Trailer Sales

5013 Washburn Way
Klamath Falls, OR 97603
541-883-2003



Check Out Our Inventory at ...

frontier-trailersales.com

Continued on page 6

Appendix A: Example Alert Messages for Recreation.gov

* The following are examples that can be used/adapted to each location's needs.

Need to Know

The primary use for this campground is equestrian use. Non equestrian use is welcomed in non-equestrian sites.

Figure 1: 'Need to Know' alert on Recreation.gov.

Equestrian Site

Figure 2: Equestrian site icon generated through Recreation.gov indicating individual horse campsites.

Site 013 - Loop AGNE
EQUESTRIAN NONELECTRIC
[View Details](#)

Figure 3: Equestrian site icon with image of site pop-up on map feature on Recreation.gov.

Appendix B: Example Campsite Signage

* The following are examples that can be used/adapted to each location's needs.



Figure 4: Horse camp sign designed as an example.



Figure 5: Signage used by the Deschutes National Forest.



Figure 6: Entrance signage used at the Bull Trout Horse Camp on the Boise National Forest. (Photo: Freddy Dunn)

Appendix C: Forest Orders used for horse camps

* The following are examples that can be used/adapted to each location's needs.

I hope you have found this supportive and informational for you and your chapter.

This Highline will be posted on our BCHO.org website. However, if you would like to see more information on this and in larger print, please go to bcha.org/public-lands

MEMBER HOME ALERTS ABOUT EDUCATION GIVING VOLUNTEERING PUBLIC LANDS MEMBERSHIP

Camps on Public Lands, BCHA Needs Your Help!

We need help in documenting incidents of parties without stock occupying developed horse camps in your State. BCHA is relying on its members to provide data from the field of your observations, should we need to promote further solutions.

[Download Horse Camp Incident Form](#)

[Online Horse Camp Incident Form](#)

In early 2022 the Forest Service's national office circulated a memo to all National Forests and National Grasslands titled "Recommended Best Practices for Managing Stock Use Sites at Developed Campgrounds". BCHA Encourages Chapters to Review USFS Memo "Best Practices for Managing Stock Use Sites at Developed Campgrounds" & Discuss with Local USFS Staff.

ORDER

SPECIAL CLOSURE

USDA - FOREST SERVICE
GIFFORD PINCHOT NATIONAL FOREST
MOUNT ST. HELENS NATIONAL VOLCANIC MONUMENT
LEWIS RIVER HORSE CAMP

PURSUANT TO 36 CFR SEC. 261.50 (a), THE FOLLOWING ACTS ARE PROHIBITED ANNUALLY DURING THE PERIOD APRIL 1 TO SEPTEMBER 30, WITHIN THE LEWIS RIVER HORSE CAMP, WITHIN THE MOUNT ST. HELENS NATIONAL VOLCANIC MONUMENT, GIFFORD PINCHOT NATIONAL FOREST, UNTIL FURTHER NOTICE.

- 1) Entering or using the Developed Camping Area of the Lewis River Horse Camp from April 1 to September 30. 36 CFR Sec. 261.58 (b)

PURSUANT TO 36 CFR SEC. 261.50(a), THE FOLLOWING ARE EXEMPT FROM THIS ORDER:

- 1) Person (or persons in the company of a person) possessing at least one saddle, pack, or draft animal in a single camp unit.
- 2) Person (or persons in the company of a person) possessing at least two saddles, pack or draft animals in a double camp unit.
- 3) Person (or persons in the company of a person) possessing at least 3 saddles, pack or draft animals in a group camp unit.
- 4) Federal, State, or local law enforcement officer, or member of an organized rescue or fire fighting force in the performance of an official duty.

DONE AT VANCOUVER, WASHINGTON, THIS 3rd DAY OF August, 1994

[Signature]
Forest Supervisor

VIOLETION OF THESE PROHIBITIONS IS PUNISHABLE BY A FINE OF NOT MORE THAN \$5000.00 OR IMPRISONMENT FOR NOT MORE THAN SIX (6) MONTHS OR BOTH. TITLE 16 USC, SECTION 551.

12-94-006 94 Mount St. Helens NUM
Order no. Fiscal Yr. Monument.

Figure 7: A Forest Order from 1994 on the Gifford Pinchot National Forest for the Lewis River Horse Camp prohibiting use of the site annually between April 1 and September 30 by users other than parties with stock.

09-D2-11

BITTERROOT NATIONAL FOREST
1801 N. First Street
Hamilton, MT 59840
Forest Supervisor's Order

Pursuant to Title 36 Code of Federal Regulation 261.50(b), the following acts are prohibited at National Forest Campground, Rock Creek Horse Camp, on the Darby Ranger District of the Bitterroot National Forest. These prohibitions are in addition to those enumerated in Subpart A, Part 261, Title 36, Code of Federal Regulations and will remain in effect until rescinded.

36 CFR 261.58 — Occupancy and Use

Persons, without stock, are prohibited from camping in designated stock camp sites at National Forest Campground Rock Creek Horse Camp as described below, Title 36 CFR 261.58(d).

For the purpose of this order, three developed camp sites within Rock Creek Horse Camp, located in the Lake Como Recreation Area, are designated for stock use only. Persons without stock are prohibited from camping in or occupying the three sites designated for stock use. The sites will be signed and designated on the ground. Designation of stock use only camp sites provides a safe recreation experience for the public and for the animals and helps minimize resource impacts from stock users camping in undeveloped horse camps.

Rock Creek Horse Camp Description:
National Forest Campground, Rock Creek Horse Camp, is located within the Lake Como Recreation Area in the North Central ¼ of Section 32, T4N, R21W.

Exemptions:

Pursuant to Title 36 CFR 261.50(e), the following are exempt from this restriction:

1. Persons with a permit issued by a forest officer specifically authorizing the otherwise prohibited act or omission.
2. Any Federal, State, or local officer or member of an organized rescue or fire fighting force in the performance of official duty.
3. Logging contractors and their employees while engaged in official business within the area.
4. Forest Administrative personnel.

Done at Hamilton, Montana this ____ 17th ____ day of ____ June ____ 2009.

[Signature]
By: **DAVE T. BULL**
Forest Supervisor
Bitterroot National Forest

Penalty

Violation of these prohibitions is punishable by a fine of not more than \$5,000 for an individual or \$10,000 for an organization, or imprisonment for not more than six (6) months, or both (16 USC 551 and 18 USC 3559 and 3571).

Notification

A copy of this order shall be posted as prescribed under 36 CFR 261.51.

Figure 8: A 2009 Forest Order on the Bitterroot National Forest for the Rock Creek Horse Camp. This order prohibits parties without stock from camping in three developed camp sites.

Continued on page 7



HORSE CAMP INCIDENT REPORT FORM

Consider printing and keeping copies of this blank form in your truck for your visits to public horse camps

Date: _____ Time: _____ Day of Week: _____

1. How many **horse** campsites were occupied by parties without stock? ____ Photos taken? Yes or No (circle)

2. State _____ Forest or Park Name _____ Campground name _____

3. Agency managing horse camp: (State, U.S. Forest Service, BLM, National Park Service, Other) Circle one.

4. Is this a Reservation-Only Campground or is the campsite(s) in question available on a First-Come-First-Served basis? (circle the appropriate answer).

5. Is this a fee campground? Yes or No (circle) If Yes, how much is the per night fee? \$ _____

6. BCHA encourages members to notify either the camp host or agency staff of the presence of parties without stock occupying equestrian campsites. Was there a Camp Host on site? Yes or No (circle) If Yes, did you speak to someone locally about this? Yes or No (circle)

7. How many nights did the non-equestrians stay during your observance? ____ (or I left, so don't know)

8. Did the party/parties without stock act in ways that made conditions with your stock animals unsafe? Yes or No (circle). If yes, what actions or activities made you feel unsafe? Examples include unsupervised children climbing corral fences, loud noises like fireworks or revving of ATV engines, etc.

9. How did the presence of the non-equestrian campers affect your visit to the campground?

10. Person reporting: Name _____ Email _____

Phone _____ Zip Code _____

Please attach photographs if possible, copy this completed form, and send to: michellewade@bcha.org

March 2, 2022

Here is the Copy of the Second "Found here/ accessed here" noted in the email that is the Incident Report form from BCHA, Please note the contact on the form itself.

TBM SADDLES

Trail saddles for the 21st century / tmsaddles@gmail.com

TBM Saddles is the result of years of hard work in the saddle and tack industry. Although we provide saddles for all disciplines, our focus is on trail riders and packers. Those of us involved in TBM Saddles have over 200 years of combined experience in the saddle, tack and leather industry. We also offer custom saddle fitting for the most comfortable fit for you and your Mule, horse or donkey. All saddles feature 10yr warranty on tree. One year warranty offered on material and workmanship.



The Outrider



The Montosa



Working Trail Saddle



Guidebooks!



www.nwhorsetrails.com



Big Selection of High Quality Pack Gear & Equipment



Bear Cloth Panniers

- Pack Saddles
- Pack Panniers
- Top Packs & Covers
- Camping Equipment
- Dutch Ovens
- Riley Tent Stoves



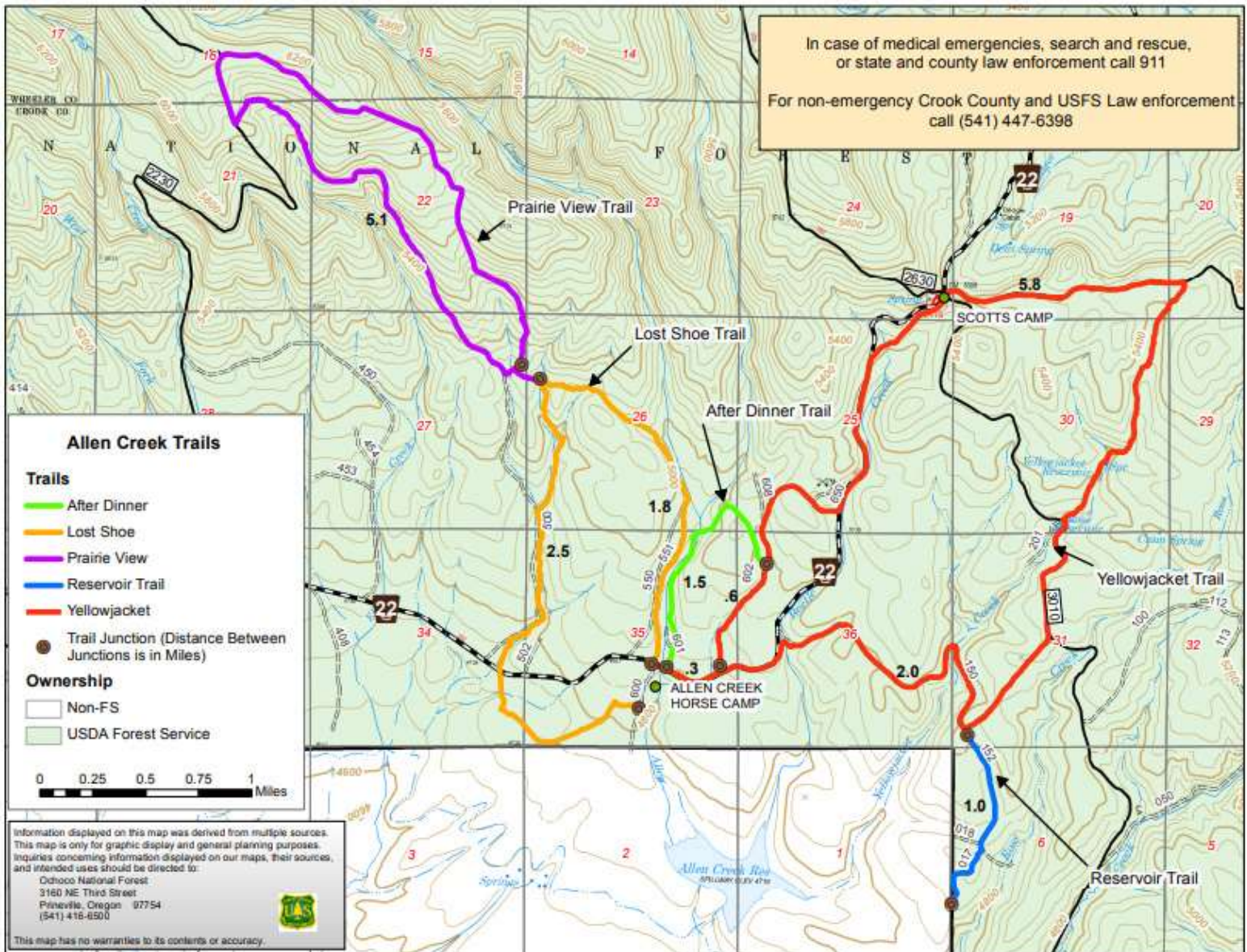
Phillips 'Formfitter' Pack Saddle!



www.outfitterspackstation.com

Ochoco National Forest, Allen Creek Horse Camp Trail Map

Submitted by Kim McCarrel



The trails will need a bit of logging out and brushing this spring (work party TBA) and then will be in great shape. I hope everybody gets a chance to go ride them this summer. This Map has already been up-loaded to the Forest Service Web site.

Our Horses Help Clean Up the Beach

Submitted by Jean Clancey, EEBCHO



Ten members and friends of Emerald Empire Chapter BCHO mounted up on a mostly sunny Saturday in March to clean Baker Beach, a long stretch of sand and dunes north of Florence. We have undertaken this project every spring for 24 consecutive years. (All right, there have been a few cancellations: Tsunami danger, snow on the coast range pass, lightning and torrential rain.)

The clean-up is scheduled each spring, a week before the dunes are closed to public access in order to protect the nesting snowy plovers. We ride the beach and dunes to collect a year's worth of litter that has accumulated.



Each year presents different challenges, it seems. There were three "newbie" horses along this year, trained trail horses, but inexperienced with the wind, waves, deep sand footing, and large plastic bags blowing in their faces and banging on their sides. Each and every one of them did great, riding several miles to the end of the beach and then back again riders dismounting and mounting again all the way.

This year, for some reason, lightbulbs were found in abundance and large plastic-type rugs. Word has it there was a sunken container ship that spilled tons of these rugs. It's always interesting what we find. Extra thanks to those among us who had the patience to pick up sacks full of micro plastic. A lot of back-bending goes into that work, but it is important. Shore birds can die from ingesting it.

We were supported this year by Cindy Burns Siuslaw NF Wildlife Biologist and

Oregon Dunes Recreation staff, with Courtney Gabriel Siuslaw NF Wildlife Technician and Jason Hennessey the Oregon State Parks Beach Ranger. They drove three agency pickup trucks to haul off all the garbage we collected, supplied plastic bags, and arranged to have the track over the dunes plowed for the vehicles to get to the beach. Their first order of business in the morning was to let a lot of air out of their truck tires!

Many thanks to these helpful agency staffers but a huge thanks to our volunteers:

Emily Elias, Kim Zemek, Rachel Herrick, Jean and Tim Clancey, Matt and Becky

Hope, Laurie Kinder, Bonnie Samoa, Renee Mann, and Rye Butler-Corbett. Once again Betty Jean Keele was our EEBCHO contact person with the agencies to organize this annual clean-up event. Job well done everyone! The plovers are returning along Baker Beach and other beaches all along the Oregon Coast. And the horses, which have carried us the distance all these years, are playing a major part in the little birds' recovery, too. We couldn't keep doing this without them.





Some Interesting Geology

I thought this might be interesting for others. We were riding at the Wood River Wetlands on the northern end of Klamath Lake and looking at the mountains from there I thought the flanks of the Mountain Lakes Wilderness area looked like it could have been a volcano that blew its top. So, following up on that a biologist friend sent me this information. I also remember looking at the Three Sisters Wilderness from the east side and thinking some of the same thoughts.

Betty Applebaker

Mountain Lakes Wilderness

Before its eruption and subsequent transformation into a large caldera, the area we call Mountain Lakes Wilderness was a 12,000-foot mountain, one of the giants of the southern Cascades. Glaciation then carved up the caldera, leaving a scattering of small alpine lakes instead of one enormous body of water, such as Crater Lake National Park to the north.



Only eight prominent peaks remain of the caldera's rim. Unique to the National Wilderness Preservation System, this area is the only Wilderness with a perfectly square boundary. Long appreciated for its wonder, Mountain Lakes was one of the three original Primitive areas created in 1930 in the Washington-Oregon region. Mosquitoes fly thickly from snowmelt to mid-August and provide food for the rainbow and brook trout in the lakes.

The 8.2-mile Mountain Lakes Loop Trail winds along the southern rim of the caldera, connecting three trails in the interior of the Wilderness: the Clover Creek Trail (4 miles) from the south, the Mountain Lakes Trail (6.5 miles) from the west, and the Varney Creek Trail (4.5 miles) from the north. Beyond the eastern boundary lies private land.

Geologic History

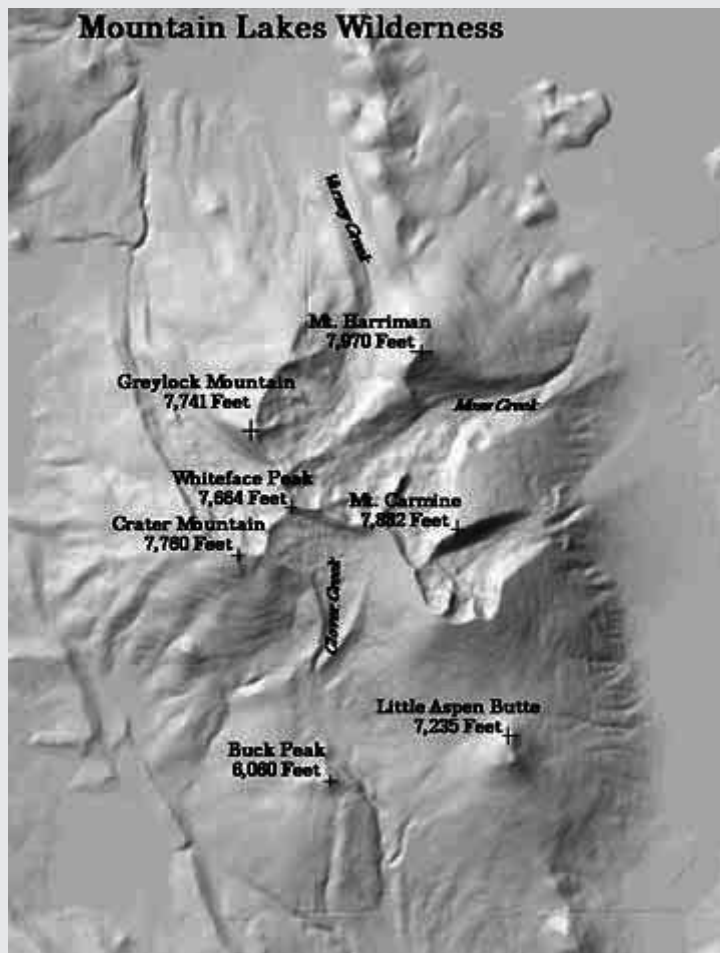
Mountain Lakes is unique, yet its geologic history is similar to that of Crater Lake National Park, its famous neighbor to the north. Like Crater Lake, the landscape contains a large caldera (a broad crater-like basin) formed by the explosion and collapse of a volcanic cone. Unlike Crater Lake, the caldera is filled with many smaller lakes rather than one big one.

It all started several million years ago with a series of volcanic eruptions that built a massive composite volcano. Covering about 85 square miles and towering over 12,000 feet, the peak was one of the giants of the southern Cascades. The same forces that built this great volcano then destroyed it.

Following the collapse of the peak, ice and snow accumulated in the caldera, eventually forming a series

of glaciers that breached the caldera rim. As these rivers of ice spread down the flanks of the mountain, they reshaped it.

Today, eight prominent peaks are all that remain of the original rim. Repeated glaciations continued to shape the land, gouging out beds for the many small lakes, each with its own personality and unique environmental setting.



"So big and friendly, you'll think you're in Texas"

Chris Zucker

(503) 362-4973 • 1-800-508-4973 • Fax (503) 362-3150

www.doublehwesternwear.com

E-Mail: Doubleh@doublehwesternwear.com

4198 Silverton Rd. NE • Salem, OR 97305

Check it out!!

Highline Advertising

Default sorting ▾

Showing all 4 results

Thank you for your interest in advertising in the Highline Newsletter. The Highline is a newsletter printed tri-annually; April 15, June 15 and November 1. It is circulated to all BCHO members statewide, the offices of USFS, BLM, NPS, other BCHO and BCHA organizations, and all advertisers. The Highline will be included on the BCHO webpage. Advertisers will not have an exclusive ad or specific location in the newsletter. Ads will be edited only for spelling and format to be consistent with other ads or content.

Here are the details on how to submit ads in the Highline Newsletters, thanks again for your interest in advertising with us.

Ad Size	Size of Ad	Rate per Year	Rate per Issue
Full Page	8" X 10.5"	\$300	\$125
Half Page Vertical	4" X 10.5"	\$200	\$85
Half Page Horizontal	8" X 5.25"	\$200	\$85
Quarter Page	4" X 5.25"	\$150	\$65
Business Card	3.5" X 2"	\$100	\$45



Please have your ad designed and pre-sized to the above sizes. Please submit any ads in PDF format. Images can be in PDF, JPEG or PNG format. Please email color images to included with your ad to advertising@bcho.org. When viewed on email or from the website, they will be in color, but they will be converted to black and white for the printed version. Your ad will run in the issue following receipt of your ad copy and payment.

If you wish to pay via check, send to, BCHO Ads, PO Box 3476 Salem, OR 97302. Please include information about your ad type and size. For more info please email, BCHO Newsletter Advertising advertising@bcho.org.

Purchase your Ad

Full Page Ad

\$125.00 - \$300.00

Select options

Half Page Ad

\$85.00 - \$200.00

Select options

Quarter Page Ad

\$65.00 - \$150.00

Select options

Business Card Ad

\$45.00 - \$100.00

Select options



Your Oregon EQUINE Resource



Largest FREE Online Equine Event Calendar in Oregon.

Submit Your Events Today

Trail Rides - Facilities - Equine Tours - Tack Boarding - Training - Lessons - Kids/Adult Camps Farm/Ranch Real Estate - Vets/Health Equine Business Assistance - and MORE!

Get Listed for FREE in the 2019-20 Oregon Horse Directory!

More details on our website



FREE

Be sure you are listed! Call us today! 971-224-5979

Oregon's Official Guide to Equine Businesses
 Associations • Tack & Feed • Trainers • Online Stores • Lessons • Boarding
 Breeders • Youth Camps & Programs • Clubs • Non-Profits • Veterinarians
 Farriers • Adult Camps & Programs • Fencing • Rescues • Tourist Activities
 Alternative Medicines • Equine Business Resources and so much more!

OregonHorseCountry.com
 Facebook.com/OregonHorseCountry

OregonHorseCountry.com | Facebook.com/OregonHorseCountry

Events Calendar

April					
Date	Time	Chapter Cal.	Event Title	Location	Description
Apr 22-23		Columbia Gorge BCH Chapter	Columbia Gorge work party	Gilson Prairie Horse Camp, Oregon 97055	
Apr 23	10:00AM -	Hight Desert Trail Riders	Klamath Equestrian Center Tack Sale - Pam Lehto 541-892-3144	Klamath Equestrian Center, 779 Miller Island Rd, Klamath Falls, OR 97603	HDTR will have a booth at the Klamath
May					
May 5	07:00PM -	BCHO State Calendar	BCHO President Call		BCHO President Call
May 10-17		BCHO State Calendar	BCHO Black Canyon Hot Shot Team event	Coffee Pot Trailhead	
May 20-23		Emerald Empire BCH Chapter	EEBCH - Pisgah Trails/Camping Skills		
May 21-23		Columbia Gorge BCH Chapter	Columbia Gorge work party	Cyrus Horse Camp, Prineville, OR 97754	Camp clean up
May 21-22		Hight Desert Trail Riders	HDTR Spring Tune Up - Boehner's property - Cindi: 530-260-8121	15600 S Poe Valley Rd, Klamath Falls, OR 97603	Ride day with obstacles to practice on and
June					
Jun 2	07:00PM -	BCHO State Calendar	BCHO President Call		BCHO President Call
Jun 4-5		Public Equestrian Events	Oregon State Parks Day - no fees -promotion time!		This is a great time to promote the State
Jun 9-14		Emerald Empire BCH Chapter	Corncob Ranch Horse Camp	Corncob Ranch, 23193 Winlock Rd, Fossil, OR 97830	singledue@eou.edu to make arrangement
Jun 10-13		BCHO State Calendar	BCHO State Work Party	Allen Creek Horse Camp, Oregon	Contact Becky Wolf
Jun 18-19		Hight Desert Trail Riders	HDTR Rye Spur Trail log out - Betty: 541-891-8220	Rye Spur Trail, Klamath Falls, OR 97601	Rye Spur trail clearig on the the upper half.
Jun 23-26		Hight Desert Trail Riders	HDTR Marble Mountains Pack Trip, CA - snow permitting - Betty: 541-891-8220		HDTR Marble Mountains Pack Trip, CA - snow
Jun 24-27		Columbia Gorge BCH Chapter	Columbia Gorge Senger Campout	54893 Smock Rd, Wamic, OR 97063	Contact/Joy Senger 541-544-2023
Jun 24	10:00AM -	Emerald Empire BCH Chapter	Middle Fork Trail ride		See Jean Clancy for info
Jun 27-28		Hight Desert Trail Riders	HDTR Pack Support - Trapper Lake area - Betty: 541-891-8220		HDTR Pack Support for Anthony
July					
Jul 1-4		Emerald Empire BCH Chapter	EEBCH - Robinson LK	Robinson Lake Trailhead, McKenzie Bridge, OR 97413	
Jul 2-3		Hight Desert Trail Riders	Fort Klamath Roping - raffle booth - Pam Lehto: 541-892-3144		Fort Klamath Roping Booth with raffle items and ticket sales Contact Pam Lehto for more information: 541-892-3144
Jul 5-6		Hight Desert Trail Riders	HDTR Pack Support - Sky Lakes Wilderness - Betty: 541-891-8220		HDTR Pack Support for Anthony Sky Lakes Wilderness Contact Betty Applebaker for more information: 541-891-8220
Jul 7-11		Hight Desert Trail Riders	HDTR Marble Mountains Pack Trip (if June dates do not work due to snow) - Betty: 541-891-8220		HDTR Marble Mountains Pack Trip (if June dates do not work due to snow)/Contact Betty Applebaker for more information: 541-891-8220 Tentative itinerary: Thursday drive & spend night at trailhead, pack in on Friday, pack out & drive back Sunday.
Jul 7	07:00PM - 08:00PM	BCHO State Calendar	BCHO President Call		BCHO President Call
Jul 15-16		Emerald Empire BCH Chapter	Fish Packing Harrelson Horse Camp	Harralson Horse Camp, Willamette National Forest, OR	info Becky Hope 541-337-3138 6fhope@gmail.com
Jul 16-18		Emerald Empire BCH Chapter	EEBCH - work party PCT-Pengra Pass Trail work	Pengra Pass, Oregon	
Jul 16-17		Hight Desert Trail Riders	HDTR Poker Ride fundraiser - Valeree Greenwell's property		HDTR Poker Ride fundraiser on Valeree Greenwell's property. Treasure hunt style poker ride and food. Contact Gayle Carlson for more information.
Jul 28-1		Emerald Empire BCH Chapter	EEBCH - Rock Pile/Camas Pack Support		
August					
Aug 1	05:30PM - 06:30PM	Emerald Empire BCH Chapter	EEBCH - Foley Ridge/Buck Meadows Pack in	Louise Creek Trailhead OR	
Aug 4	07:00PM - 08:00PM	BCHO State Calendar	BCHO President Call		BCHO President Call
Aug 12-14		Emerald Empire BCH Chapter	EEBCH Waldo 100k	Willamette Pass, Oregon 97733	
Aug 16-21		Emerald Empire BCH Chapter	Nash Lake ODFW Fish Pack		
Aug 20-21		Hight Desert Trail Riders	HDTR Ride & Picnic at Liz Warren's property		HDTR Ride & Picnic at Liz Warren's property
Aug 24-25		Hight Desert Trail Riders	HDTR PCTA pack support IN - Devils Peak area - Betty: 541-891-8220		HDTR Pacific Crest Trail Association pack support IN Devils Peak area Contact Betty Applebaker for more information: 541-891-8220
Aug 25-29		Emerald Empire BCH Chapter	EEBCH - Quinn Lakes	Winchester Ridge Trailhead, Oakridge, OR 97463	Packing Andrea and Camas Group into Quinn Lks
Aug 31-1		Hight Desert Trail Riders	HDTR PCTA pack support OUT - Devils Peak area - Betty: 541-891-8220		HDTR Pacific Crest Trail Association pack support OUT Devils Peak area Contact Betty Applebaker for more information: 541-891-8220
September					
Sep 1	07:00PM - 08:00PM	BCHO State Calendar	BCHO President Call		BCHO President Call
Sep 2-5	12:00PM - 12:00PM	Territorial Riders BCH Chapter	Camping with Parhams	Lava Lake Campground, Bend, OR 97701	
Sep 9-10		Hight Desert Trail Riders	HDTR PCTA pack support IN - Ranger Springs - Betty: 541-891-8220		HDTR Pacific Crest Trail Association pack support IN Ranger Springs Contact Betty Applebaker for more information: 541-891-8220
Sep 14-15		Hight Desert Trail Riders	HDTR PCTA pack support OUT - Ranger Springs - Betty: 541-891-8220		HDTR Pacific Crest Trail Association pack support OUT Ranger Springs Contact Betty Applebaker for more information: 541-891-8220
Sep 17-18		Hight Desert Trail Riders	HDTR Chapter Picnic & Playday - Hilbert's property	Lonesome Duck Ranch, 32955 US-97 N, Chiloquin, OR 97624	Potluck & obstacles to practice on.
Sep 21-22		Hight Desert Trail Riders	HDTR PCTA pack support IN - northern PCT - Betty: 541-891-8220		HDTR Pacific Crest Trail Association pack support IN northern PCT Contact Betty Applebaker for more information: 541-891-8220
Sep 28-29		Hight Desert Trail Riders	HDTR PCTA pack support OUT - northern PCT - Betty: 541-891-8220		HDTR Pacific Crest Trail Association pack support OUT northern PCT Contact Betty Applebaker for more information: 541-891-8220
Sep 29-3		Emerald Empire BCH Chapter	EEBCH - Taylor Burn/Torrey Lakes	Harralson Trailhead (recgovnpsdata), Oakridge, OR 97463	Camas/Emerald Trip
October					
Oct 6	07:00PM - 08:00PM	BCHO State Calendar	BCHO President Call		BCHO President Call
Oct 15	08:00AM - 01:30PM	Public Equestrian Events	Clackamas 4-H Tack Sale	694 NE 4th Ave, 694 Northeast 4th Avenue, Canby, OR 97013	The Clackamas County 4-H Tack Sale is a fundraiser for the 4-H Horse Advisory Committee. It is held twice each year at the Clackamas County Fair and Event Center in Canby, on the third Saturday of March and October. The sale includes new and used tack as well as other horse-related items. Parking 5\$, admission is \$1 per person.

Continuation of calendar from page 14

November				
Nov 3	07:00PM - 08:00PM	BCHO State Calendar	BCHO President Call	BCHO President Call
December				
Dec 1	07:00PM - 08:00PM	BCHO State Calendar	BCHO President Call	BCHO President Call
Dec 10	02:00PM - 05:00PM	Columbia Gorge BCH Chapter	Columbia Gorge Christmas party	Hood River Saddle Club, 4384 Belmont Dr, Hood River, OR 97031
January				
Jan 5	07:00PM - 08:00PM	BCHO State Calendar	BCHO President Call	BCHO President Call
February				
Feb 2	07:00PM - 08:00PM	BCHO State Calendar	BCHO President Call	BCHO President Call
March				
Mar 2	07:00PM - 08:00PM	BCHO State Calendar	BCHO President Call	BCHO President Call
Mar 18	08:00AM - 01:30PM	Public Equestrian Events	Clackamas 4-H Tack Sale	694 NE 4th Ave, 694 Northwest 4th Avenue, Canby, OR 97013 The Clackamas County 4-H Tack Sale is a fundraiser for the 4-H Horse Advisory Committee. It is held twice each year at the Clackamas County Fair and Event Center in Canby, on the third Saturday of March and October. The sale includes new and used tack as well as other horse-related items. Parking \$5, admission is \$1 per person.
April				
Apr 6	07:00PM - 08:00PM	BCHO State Calendar	BCHO President Call	BCHO President Call

ANNUAL MEMBERSHIPS

Membership Reminder

Fellow Back Country Horsemen of Oregon

It is that time again to renew our annual memberships. September 1st marked the date when renewal began for the 2022 year! Please note, BCHO now encourages members to either join BCHO or renew your membership online at <https://www.bcho.org/membership-form/>. Just a heads up, a dues increase of \$5 was voted in for 2022 at the 2021 Rendezvous by the membership. A Single Membership will be \$35, and a Family Membership will be \$45 for 2022. Still a bargain though for everything Back Country Horsemen does to keep riding accessible to our members!

If you would still like to join or renew for 2022, membership in a BCHO Chapter helps keep you in touch with folks who are doing rides and projects in your area. In addition, please know that we at the BCHO State level have plans for ongoing education, projects and opportunities to get together that make membership in BCHO so rewarding. Also asking that you take a moment and make what we want to do possible by considering making a Tax-Deductible donation through the Website.

WWW.BCHO.ORG

If you find it easier, you can also still join or submit your renewal through your local chapter as well. Also, chapter specific dues will not be collected during the online registration process. If your local chapter has any chapter specific dues, that amount will still need to be paid to your local chapter in addition to dues paid online to BCHO.

Thank You, Tim Lagasse, BCHO Membership Coordinator

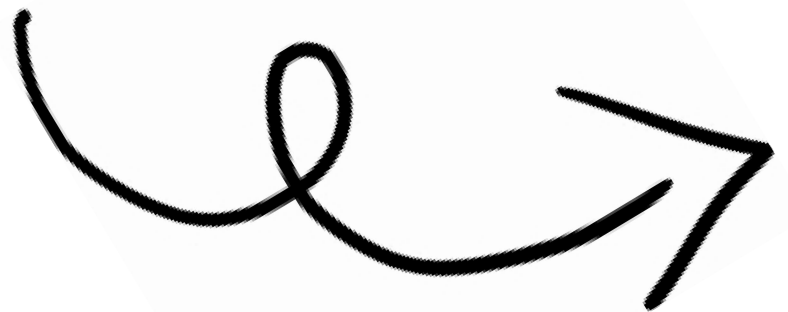
--

Tim Lagasse, BCHO Membership Coordinator

PO Box 488

Colton, OR 97017

membership@bcho.org, 503-314-7712(C)



Back Country Horsemen of Oregon, Inc.

Membership Application

Yes! I would like to help preserve Horsemen's rights
to use stock on public lands.

(Print Name)

(Address)

(City) (State) (ZIP)

(Telephone) (E-Mail)

New ___ Renewal ___ (Please check)

BCHO Membership Dues
 Single \$35 ___
 Family \$45 ___
 Patron \$100 ___
 Benefactor \$250 ___
 Sustaining \$500 ___

The membership dues collected here are paid to the state and national organizations. Some Chapters have additional dues, see below for the amount and please pay them directly.

[See Map of Chapters, www.bcho.org/chapters/.](http://www.bcho.org/chapters/)

___ Columbia Gorge, Hood River \$10 ___ Steens, South East Oregon \$10
 ___ East Cascades, Bend ___ Sourdough, South West Oregon \$5
 ___ Emerald Empire, Eugene \$5 ___ Territorial Riders, Oregon City \$5
 ___ High Country Wilderness Packers ___ West Cascade BCH, Salem \$5
 Chapter ___ Member At Large
 ___ High Desert Trail Riders,
 Klamath Falls area

Our newsletter the Highline, will be emailed to you at the address you entered above.

- Check here if you prefer to receive the newsletter by US mail.
- Check here if you prefer include your email address in the information sent to BCHA.

Mail your application along with your check to:
Tim Lagasse, PO Box 488, Colton, OR 97017
For questions email membership@bcho.org

Liability Release: Recognizing the fact that there is a potential for an accident where ever horse use is involved, which can cause injuries to horses, riders and spectators, and also recognizing that Back Country Horsemen of Oregon, Inc., including its chapters, officers, directors and /or members cannot know the condition of trails or the experience of riders or horses taking part in trail rides or other Back Country Horsemen of Oregon functions, I do hereby release Back Country Horsemen of Oregon, Inc., its officers, directors and members from any claim or right for damages which might occur to me, my minor children or horses.

Signed _____ Date _____

Signed _____ Date _____

*Must be signed by all chapter members 18 years and older.

Some Dues maybe deductible as charitable contributions for income tax purposes.
 Dues may be considered ordinary and necessary business deductions.

BCHO website: bcho.org/membership/

Back Country Horsemen of Oregon
c/o Becky Hope
37245 Wheeler Rd.
Pleasant Hill, OR 97455
(541) 337-3138

